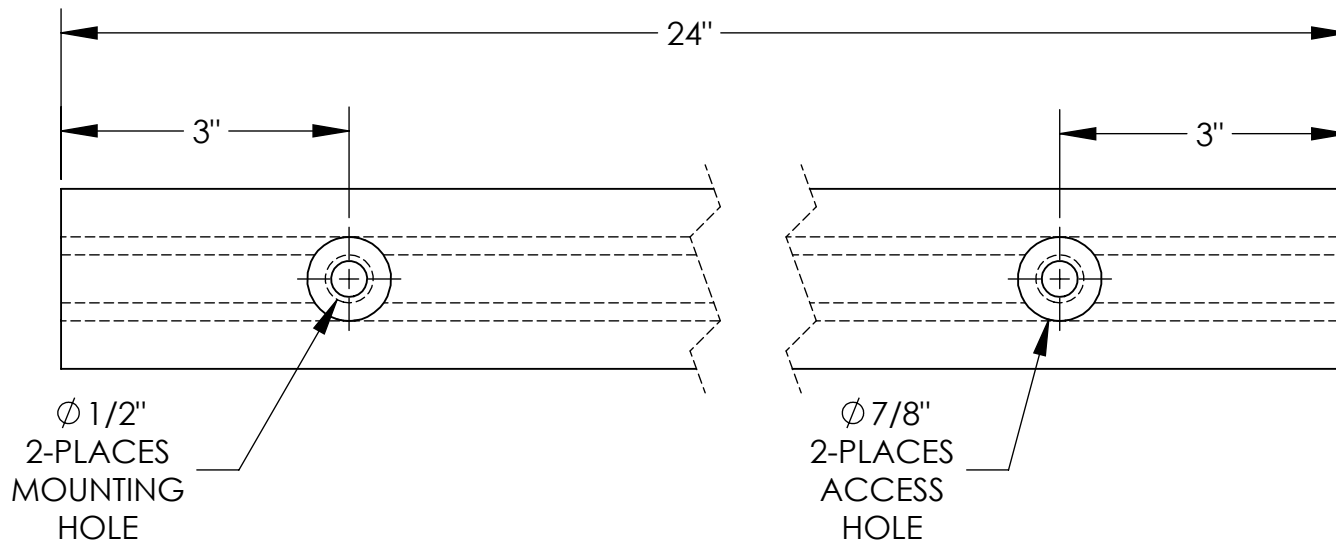
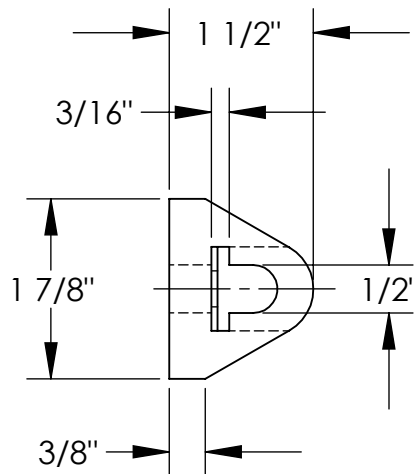


# EXTRUDED RUBBER BUMPER - M-2-24

APPROX WEIGHT: 1 lbs.  
 DOES NOT INCLUDE WEIGHT OF POWER OR PACKAGING!!!

\*\*\* ANY ADDITIONS, DELETIONS, OR OMISSIONS MUST BE CORRECTED ON THIS DRAWING AS THIS DRAWING WILL BE CONSIDERED ALL INCLUSIVE \*\*\*

ALL GRAPHICS PROVIDED ARE FOR REFERENCE ONLY. IF CERTAIN DIMENSIONS ARE CRITICAL PLEASE VERIFY THOSE DIMENSIONS WITH YOUR SALESPERSON



## STANDARD FEATURES

MODEL NUMBER IS: M-2-24  
 OVERALL WIDTH IS: 1 7/8"  
 OVERALL LENGTH IS: 24"  
 OVERALL PROJECTION IS: 1 1/2"  
 NUMBER OF MOUNTING HOLES: 2  
 MOUNTING HOLE SIZE: Ø1/2"  
 ACCESS HOLE SIZE: Ø7/8"  
 DUROMETER READING: A70 ± 5  
 TENSIL: 1850 PSI  
 ELONGATION: 220%  
 TEAR STRENGTH: 229 LBS  
 IMPACT RESISTANCE: 75%  
 BUMPER COLOR: BLACK

## SPECIAL FEATURES

NONE

DIMENSION TOLERANCE ± 3/4"

<b>APPROVAL</b>	I, THE UNDERSIGNED, AGREE THAT THE PRODUCT AS REPRESENTED SATISFIES DESIGN AND DIMENSION REQUIREMENTS. I ALSO ACKNOWLEDGE MY DUTY TO CONFIRM PRODUCT AND INSTALLATION COMPLIANCE WITH ALL APPLICABLE FEDERAL, STATE AND LOCAL REGULATIONS AND STANDARDS.	
	<b>ANY MODIFIED UNITS ARE NON-RETURNABLE</b>	
	[ ] As drawn      [ ] As marked	
Signed: _____		Date: _____
Printed Name: _____		
<b>LEAD TIME WILL START UPON RECEIPT OF SIGNED APPROVAL DRAWING</b>		

FOR INTERNAL USE ONLY PROJECT SIGN OFF	
SALES	
ENG.	
FAB.	
POWER	

DISTRIBUTOR'S NAME:		P.O.#
VESTIL MANUFACTURING		X
DRAWN BY: JWW		W.O.#
DATE: 04/25/2019		X
REFERENCE: X	SCALE: 1:2	SALES: X
QUOTED LEAD TIME: X	QUOTE #	FILE NAME:
	X	29-007-100